

## WHY TEACHERS DRINK ...

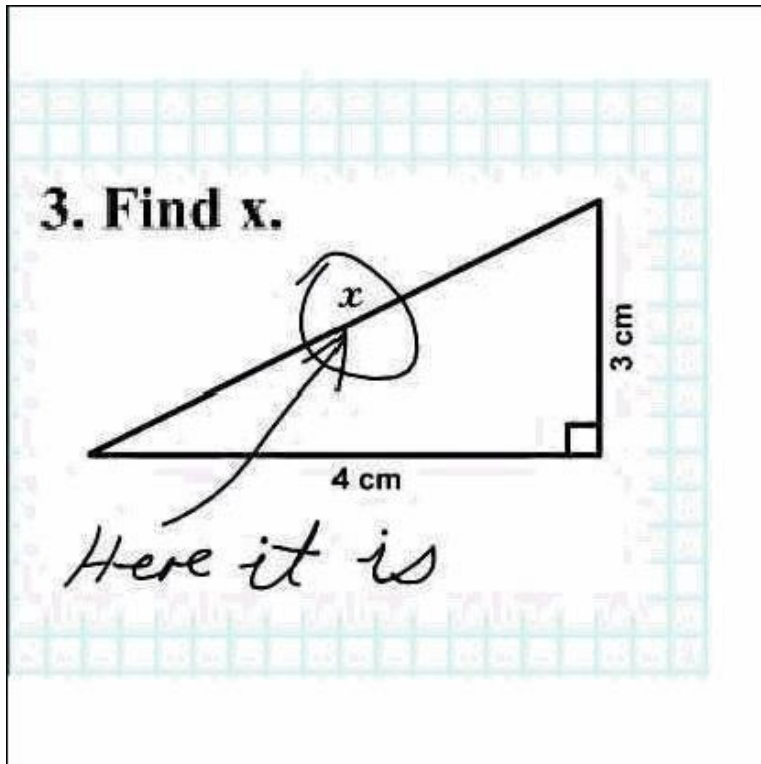
www.funnyexamanswers.com

### Transparency Worksheet 23 Hard and Soft Water

1. Briefly explain what hard water is.

ice

2. Note that calcium is one of the solids dissolved in ocean water. Describe two ways by which calcium can be removed from ocean water.



(d) Explain why phosphorus trichloride ( $\text{PCl}_3$ ) is polar.

God made it that way.

□ □ □

2. A 3-kg object is released from rest at a height of 5m on a curved frictionless ramp. At the foot of the ramp is a spring of force constant  $k = 100 \text{ N/m}$ . The object slides down the ramp and into the spring, compressing it a distance  $x$  before coming to rest.

10 (a) Find  $x$ .

5 (b) Does the object continue to move after it comes to rest? If yes, how high will it go up the slope before it comes to rest?



$$U = 3(9.81)(5) = 147.15$$

$$U_s = \frac{1}{2}(100)x^2 = 50x^2 \quad \dots?$$

NO. there is an elephant in the way.



(c) Tracey says



$(\sqrt{2} + \sqrt{8})$  is an irrational number  
 $(\sqrt{2} + \sqrt{8})^2 = 18$   
I think that if you square an  
number you always get a ratio

Tracey is wrong.

Use an example to show that Tracey is wrong.

She's a woman

PETER

1.21

4b) Expand

~~$a^2 + 2c - 2$~~   
 $(a+b)^n$

$= (a + b)^n$

$= (a + b)^n$

$= (a + b)^n$

*Very funny, Peter.*

~~X~~

~~X~~

etc...

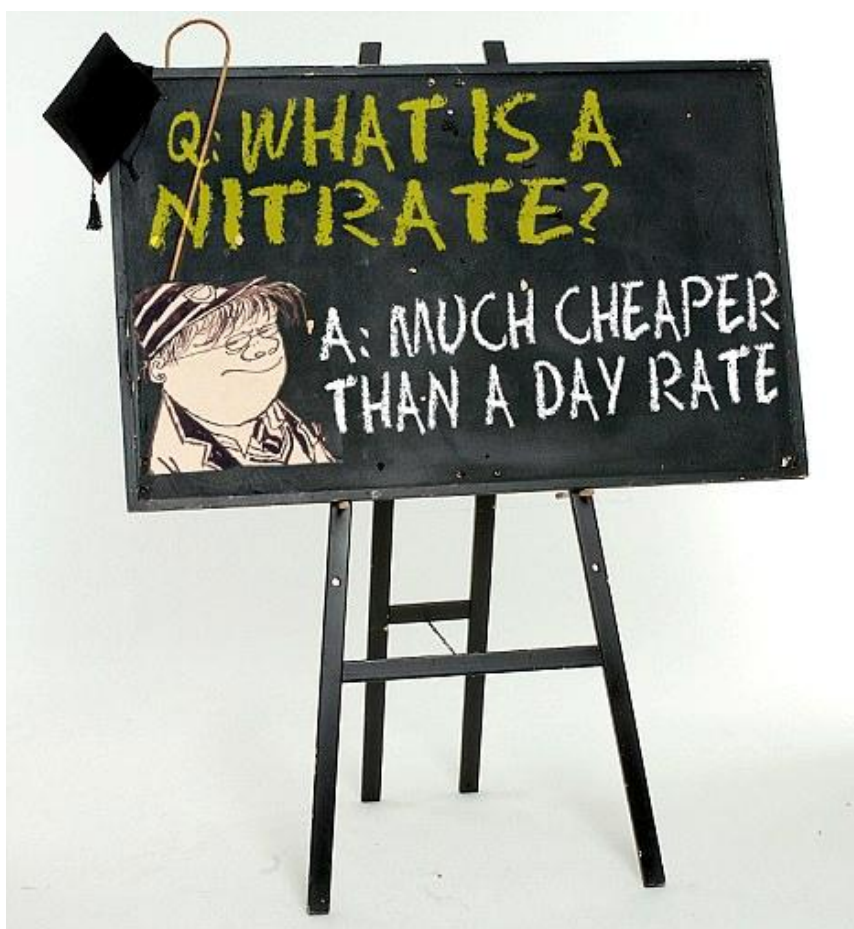
(b) Sea salt is commercially obtained from sea water by the process of evaporation and crystallization. The main component of sea salt is sodium chloride.

What type of attractive force or bond holds the sodium ions and chloride ions together in a crystal of sodium chloride?

James bond.



## Why Teachers Drink.....



What was Sir Walter Raleigh famous for?

He is a noted figure in history because he invented cigarettes and started a craze for Bicycles.

What did Mahatma Gandhi and Genghis Khan have in common?

Unusual names

Name one of the early Romans' greatest achievements.

Learning to speak Latin.

Name one measure which can be put into place to avoid river flooding in times of extensive rainfall (e.g. in Mississippi).

Flooding in areas such as the Mississippi may be avoided by placing a number of big dams into the river

Name six animals which live specifically in the Arctic.

Two polar bears  
~~Three~~ Four seals

How does Romeo's character develop throughout the play?

It doesn't, it's just self, self, self,  
all the way through.

Name the wife of Orpheus, whom he attempted to save from the underworld.

**Mrs Orpheus**

Where was the American Declaration of Independence signed?

At the bottom.

---

What happens during puberty to a boy?

He says goodbye to his childhood  
enters adulthood.

What is the meaning of the word 'varicose'?

Close by

What is the highest frequency noise that a human  
can register?

Mariah Carey.



What is a fibula?

A little lie

Explain the phrase 'free press'.

When your mum irons  
trousers for you.

Why would living close to a mobile phone mast cause ill health?

You might walk into it.

Joanna works in an office. Her computer is a stand-alone system. What is a stand-alone computer system?

It doesn't come with  
a chair

Steve is driving his car. He is travelling at 60 feet/second and the speed limit is 40 mph. Is Steve speeding?

He could find out by checking  
his speedometer.

What is a vibration?

There are good vibrations and bad vibrations. Good vibrations were discovered in the 1960s

Where was Hadrian's Wall built?

Around Hadrian's garden

The race of people known as Malays come from which country?

Malaysia